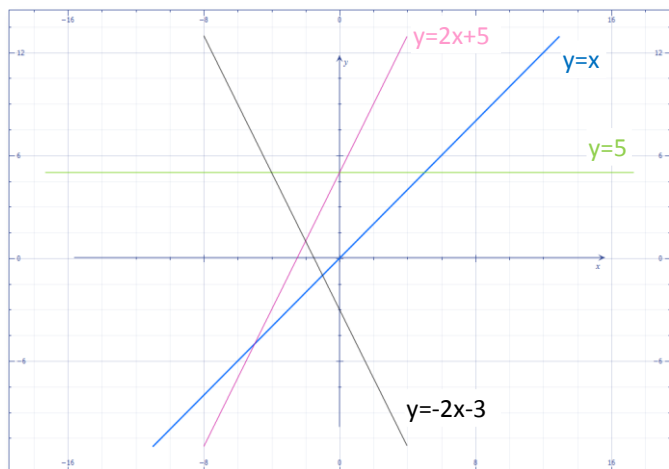
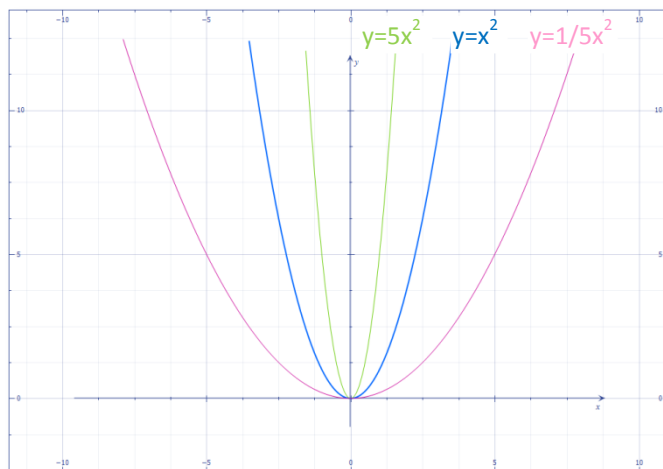


# FUNCIONES ELEMENTALES

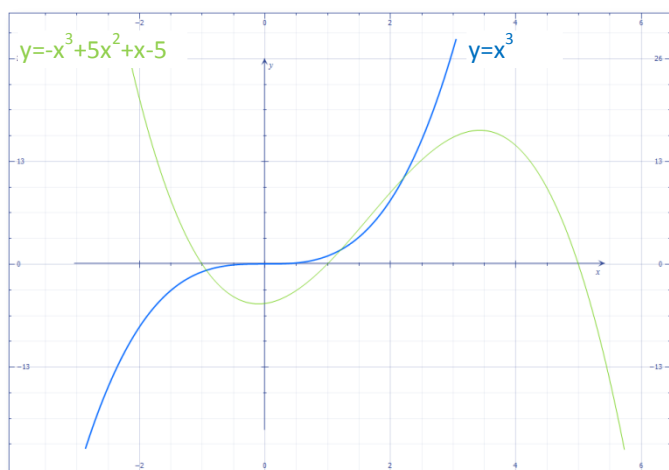
## Funciones de 1<sup>er</sup> grado (rectas): $y=mx+n$



## Funciones de 2<sup>o</sup> grado (parábolas): $y=ax^2+bx+c$



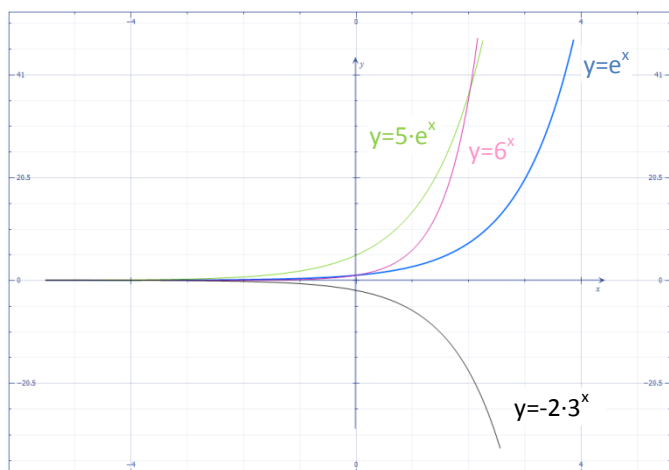
## Funciones de 3<sup>er</sup> grado: $y=ax^3+bx^2+cx+d$



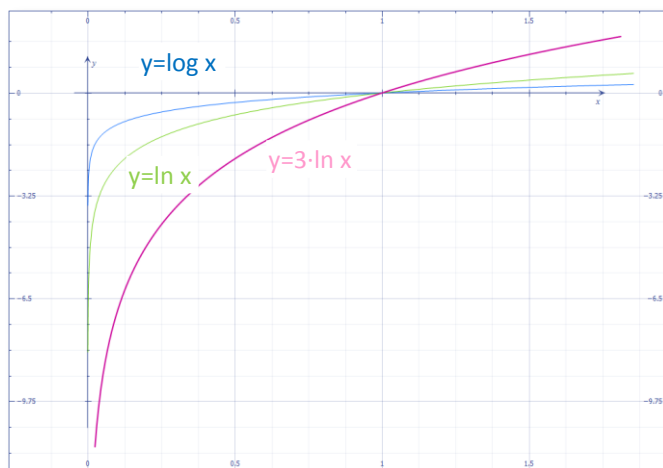
## Hipérbolas: $y = \frac{a}{x}$



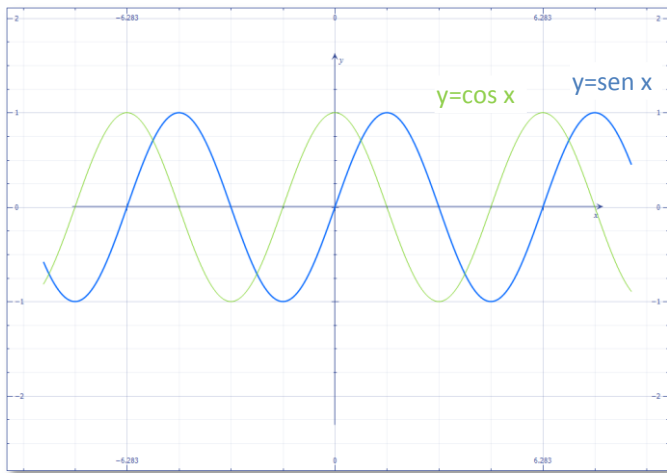
## Funciones exponenciales: $y=a^x$



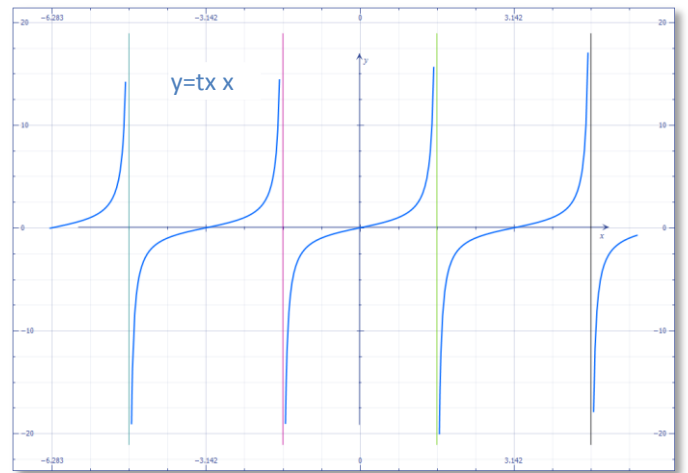
## Funciones logarítmicas: $y=\log_a x$



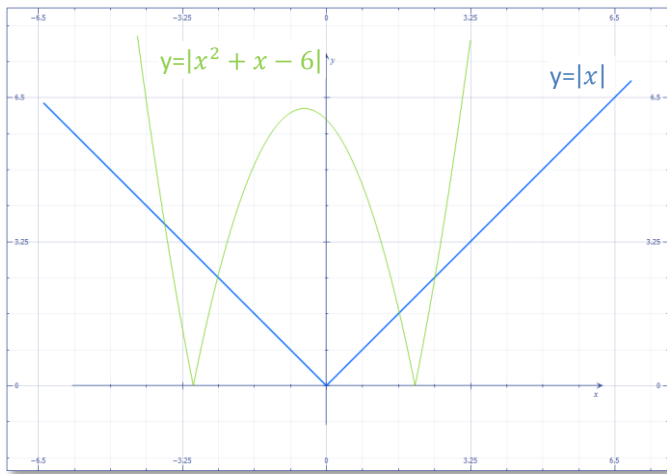
**Funciones trigonométricas:  $y=\text{sen } x$  e  $y=\text{cos } x$**



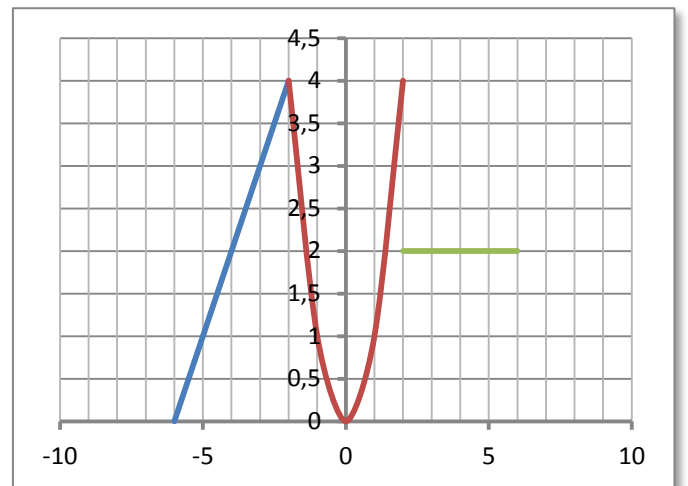
**Funciones trigonométricas:  $y=\text{tg } x$**



**Función valor absoluto:**



**Funciones definidas a trozos:**  $f(x) = \begin{cases} x + 6 & \text{se } x \leq -2 \\ x^2 & \text{se } -2 < x < 2 \\ 2 & \text{se } x \geq 2 \end{cases}$



**TRASLACIÓN DE FUNCIONES**

